



artrex

BIOCLIMATIC SYSTEM

## ALÜMİNYUM PERGOLA SİSTEMİ ALUMINIUM PERGOLA SYSTEM

### GİRİŞ

#### INTRODUCTION

Bioclimatic Pergola, su geçirmez bir gölgeleme sistemidir. Dönen lameller ve sistem tamamen alüminyumdan yapılmıştır. Güneşli günlerde güneş ışığından koruma sağlar; Özelliği ile yağmur suyundan veya kardan koruma sağlar.

Modern tasarımın çeşitliliği ile birlikte sağladığımız renkler ve farklı olma olasılığı otomatik sistemlerin eklenmesi (Led, yağmur, rüzgar, kar sensörler vb.) Bioclimatic Pergola kullanılan açık ve yarı açık alanlarda: evler, turistik tesisler, restoranlar ve kafeler gibi alanlarda kullanılmaktadır.

Bioclimatic Pergola is a waterproof shading system. Rotating lamellae and system are completely made of aluminium. Provides protection from sunlight on sunny days. With its special feature Provides protection from rain water or snow.

We provide colors and the possibility of being different adding, with the diversity of modern design (Led, rain, wind, snow sensors etc.) Using areas of Bioclimatic Pergola: homes, hotels facilities, restaurants and cafes.

Aluminum Profile Systems





## TASARIM DESIGN

Bioclimatic Pergola çalışma sırasında oluşabilecek gürültüyü minimize eder. Lamellerin hareketini lineer motorlar sayesinde 100° olur. Lamellerin serbest hareketine izin veren motorlu sistem, sistemin iç kısmında yer almaktadır. Conta kullanımı sayesinde lamellerden kaynaklanan gürültünün engellenmesi sağlanır, ve lamellerin arasından sızabilecek suyun önüne geçilir. Lameller kayış sayesinde bir tarafta toplanır. Oluğun iç kısmında led kanalları bulunmaktadır. Led ışığının RGB sayesinde değiştirilebilir. Ayrıca dimmer sayesinde ışık ayarı yapılabilir. Sistemin yan yana getirilmesiyle geniş alanlarda kullanılmaktadır.

Bioclimatic Pergola minimizes the noise that may occur during operation. The movement of the lamellae becomes 100° owing to engines. The motorized system that allows the free movement of the lamellae is located inside the system. Prevention of noise caused by lamellae with the use of gaskets. And water which may leak through on one side with strap. Lamella are collected on one side owing to strap. There are led channels in the interior of the gutter. Led light can be changed through RGB. And also light adjustable owing to dimmer. It is used in large areas by bringing the system side by side.

## OPSİYONEL ÜRÜNLER OPTIONAL PRODUCTS

Çeşitli seçilebilir otomatik sistemler arasından seçim yapma imkanı:

- Led ışığı
- Yağmur veya rüzgar sensörü
- Infrared ısıtma sistemi
- Verici ve merkezi kontrol
- Akıllı telefon kontrolü
- Güneş sensörü
- Rüzgar sensörü
- Yağmur sensörü

Choose from a variety of automatic options  
Possibility systems:

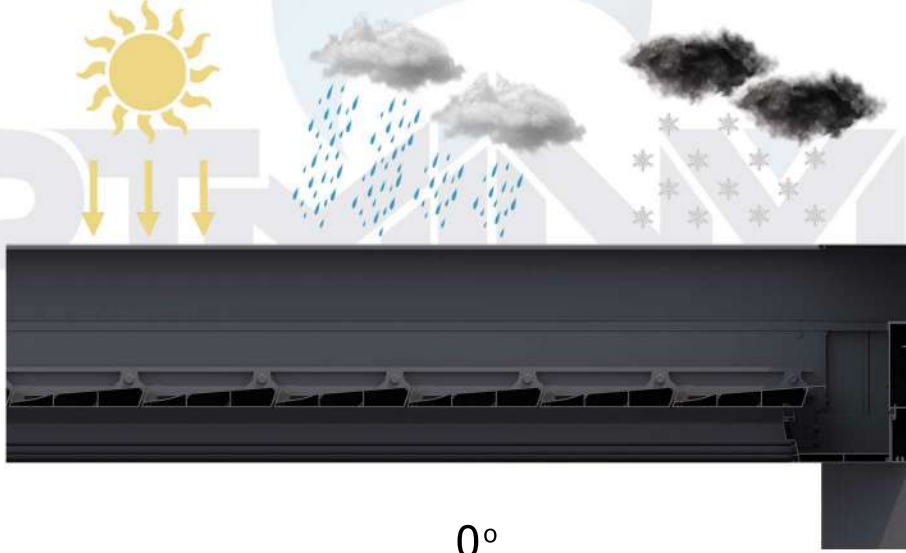
- led lightning
- Rain or wind sensor
- Infrared heating
- Transmitter and central control
- Smartphone control
- Temperature sensor
- Snow sensor
- Rain sensor

**TANITIM**  
INTRODUCTION

**LAMEL HAREKETİ**  
LAMELLA MOVEMENT

Lamellerin 0° ile 100° arasında serbest dönüşü, farklı zamanlarda pergolanın maksimum hava kullanımı sağlar.

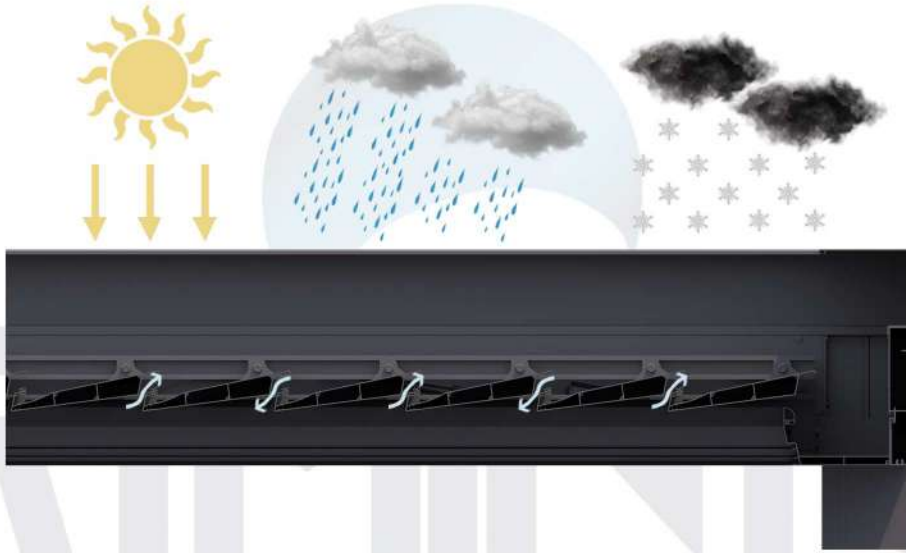
Provides maximum air using of the pergola at different times, free rotation of the lamella between 0° and 100°.



0°

Lameller kapalı kalması her türlü hava koşulundan koruma sağlar.

Provides protection from all weather conditions the roof remains closed.



5°

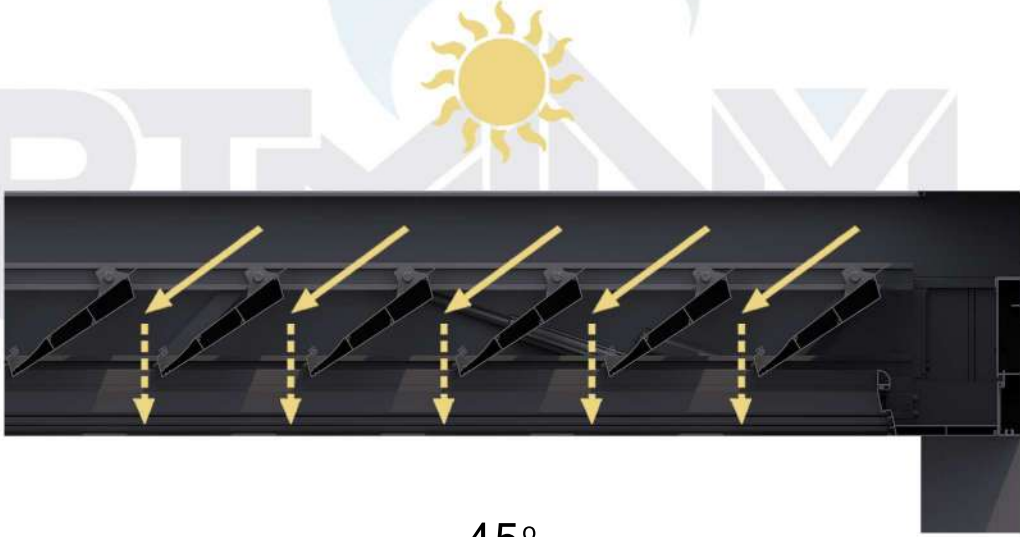
Yağmur veya kar yağıyor olsa bile alanın havalandırmasına izin verir.

Provide the ventilation of the area even if it is raining or snowing.

**TANITIM**  
INTRODUCTION

**LAMEL HAREKETİ**  
LAMELLA MOVEMENT

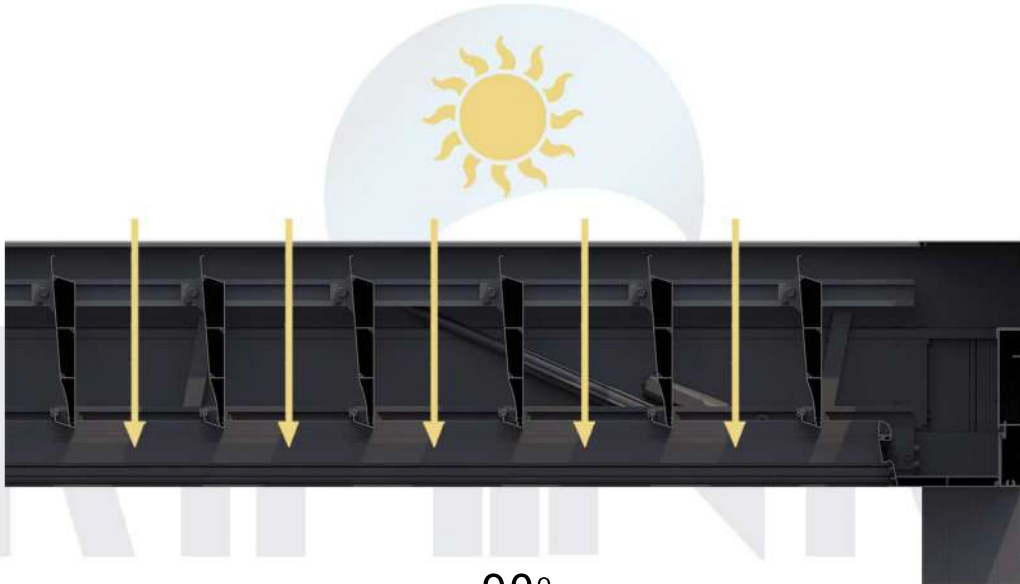
Lamellerin 0° ile 100° arasında serbest dönüşü, farklı zamanlarda pergolanın maksimum hava kullanımı sağlar. Provides maximum air using of the pergola at different times, free rotation of the lamella between 0° and 100°.



45°

Güneş ışığının girmesine izin verir, yine de aydınlatmayı kontrol eder.

Allows the sunlight to enter, still controls the lighting



90°

Güneş ışığının tam olarak kullanılmasına izin verir.

Permits full use of the sunlight.

**TANITIM**  
INTRODUCTION

**YAĞMUR SUYU DRENAJ SİSTEMİ**  
RAINWATER DRAINAGE SYSTEM

Bioclimatic Pergola, yağmur suyunu toplayacak şekilde tasarlanmıştır. Su, lamellerden yan oluklara yönlendirilir. Toplanan su ayağın içinden dışarıya aktarılır. Yağmur suyunun dışarı aktarılması için oluğa ve ayağa kertme işlemi uygulanır.

Bioclimatic Pergola is designed to collect rainwater. The water is directed to side beams of lamella. And then rainwater is directed to side gutter from lamellae. The collected water is transferred from inside of the foot to the outside notching is applied to the groove and the feet for rainwater discharge.



**TANITIM**  
INTRODUCTION

**YAĞMUR SUYU DRENAJ SİSTEMİ**  
RAINWATER DRAINAGE SYSTEM

**LAMEL SU TOPLANIŞI**  
LAMEL WATER COLLECTION

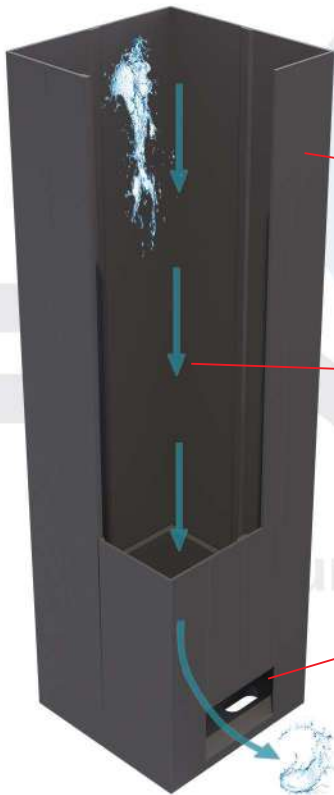
**OLUK SU YÖNÜ**  
CHUTE WATER SIDE

**SUYUN İNİŞ YÖNÜ**  
LANDING OF WATER

**DİKME**  
COLUMN

**SUYUN İNİŞ YÖNÜ**  
DIRECTION OF WATER

**SUYUN ÇIKIŞI**  
WATER OUTLET





**İÇİNDEKİLER**  
**TABLE OF CONTENTS**

|  |           |
|--|-----------|
| <b><u>PROFİL TABLOSU</u></b><br><b>PROFILES SUMMARY.....</b>                   | <b>8</b>  |
| <b><u>PROFİLLER</u></b><br><b>PROFILES.....</b>                                | <b>10</b> |
| <b><u>TİPOLOJİ</u></b><br><b>TYPOLGY.....</b>                                  | <b>16</b> |
| <b><u>AKSESUARLAR</u></b><br><b>ACCESSORIES.....</b>                           | <b>19</b> |
| <b><u>KESİM HESAPLAMA TABLOSU</u></b><br><b>CUTTING CALCULATION TABLE.....</b> | <b>25</b> |
| <b><u>KURULUM TALİMATLARI</u></b><br><b>INSTALLATION INSTRUCTIONS.....</b>     | <b>30</b> |








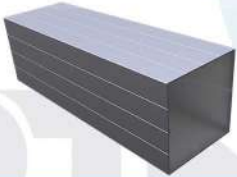





# PROFIL TABLOSU PROFILES CHART

Aluminum Profile Systems



**PROFİL TABLOSU  
PROFILES CHART**

| <b>PROFİL<br/>PROFILE</b> | <b>ÇİZİM<br/>DRAWING</b>  | <b>AĞIRLIK<br/>WEIGHT</b> | <b>UZUNLUK<br/>LENGHT</b> | <b>SAYFA<br/>PAGE</b> |
|---------------------------|---|---------------------------|---------------------------|-----------------------|
| 2420                      |    | 3,705 kg/m                | <b>7 METRE</b><br>7 METER | 11                    |
| 2421                      |    | 1,171 kg/m                | <b>7 METRE</b><br>7 METER | 11                    |
| 2422                      |    | 3,984 kg/m                | <b>7 METRE</b><br>7 METER | 12                    |
| 2423                      |   | 3,310 kg/m                | <b>7 METRE</b><br>7 METER | 12                    |
| 2424                      |  | 4,667 kg/m                | <b>7 METRE</b><br>7 METER | 13                    |
| 2426                      |  | 4,472 kg/m                | <b>7 METRE</b><br>7 METER | 13                    |
| 2556                      |  | 2,540 kg/m                | <b>7 METRE</b><br>7 METER | 14                    |
| 2090                      |  | 3,075 kg/m                | <b>7 METRE</b><br>7 METER | 14                    |
| 2091                      |  | 0,915 kg/m                | <b>7 METRE</b><br>7 METER | 15                    |

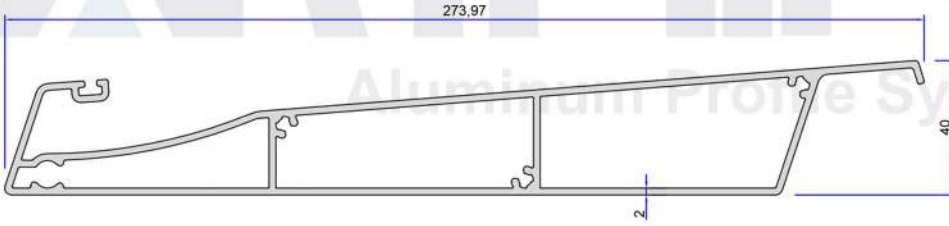


**PROFILLER**  
**PROFILES**

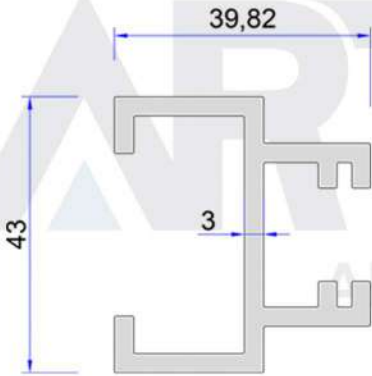
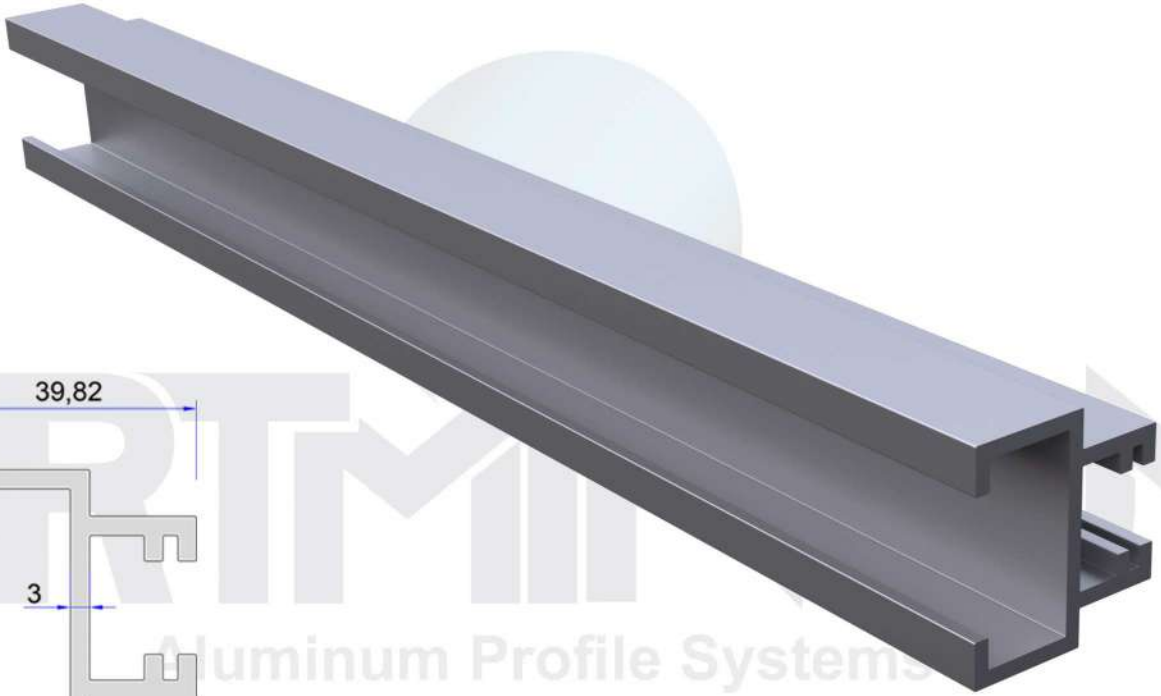
ARTIMONYUM®

Aluminum Profile Systems

**PROFİLLER**  
**PROFİLES**

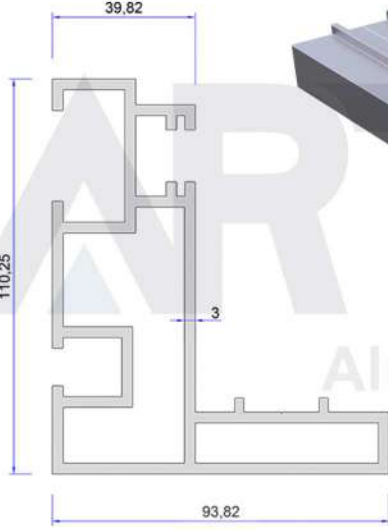


| PROFİL<br>PROFİLE | 2420 | İSMİ<br>NAME | LAMEL<br>LAMELLA | AĞIRLIK<br>WEIGHT | 3,705 kg/m | UZUNLUK<br>LENGHT | 7 METRE<br>7 METER |
|-------------------|------|--------------|------------------|-------------------|------------|-------------------|--------------------|
|-------------------|------|--------------|------------------|-------------------|------------|-------------------|--------------------|

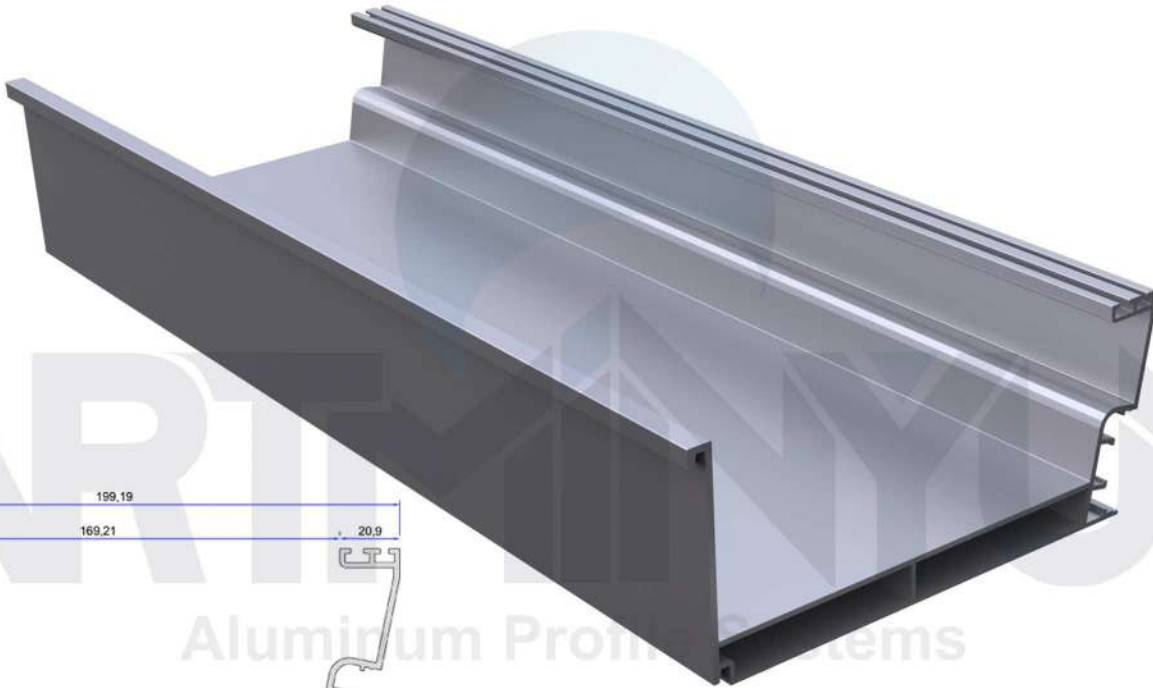


| PROFİL<br>PROFİLE | 2421 | İSMİ<br>NAME | RAY ÜST EK<br>RAY TOP ADD | AĞIRLIK<br>WEIGHT | 1,171 kg/m | UZUNLUK<br>LENGHT | 7 METRE<br>7 METER |
|-------------------|------|--------------|---------------------------|-------------------|------------|-------------------|--------------------|
|-------------------|------|--------------|---------------------------|-------------------|------------|-------------------|--------------------|

**PROFİLLER**  
**PROFİLES**

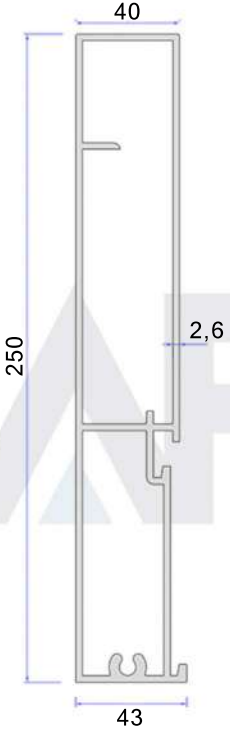


| PROFİL<br>PROFİLE | 2422 | İSMİ<br>NAME | RAY<br>RAİL | AĞIRLIK<br>WEIGHT | 3,984 kg/m | UZUNLUK<br>LENGHT | 7 METRE<br>7 METER |
|-------------------|------|--------------|-------------|-------------------|------------|-------------------|--------------------|
|-------------------|------|--------------|-------------|-------------------|------------|-------------------|--------------------|

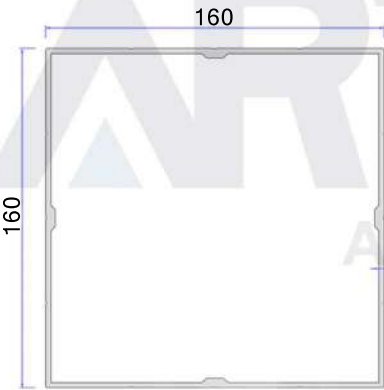
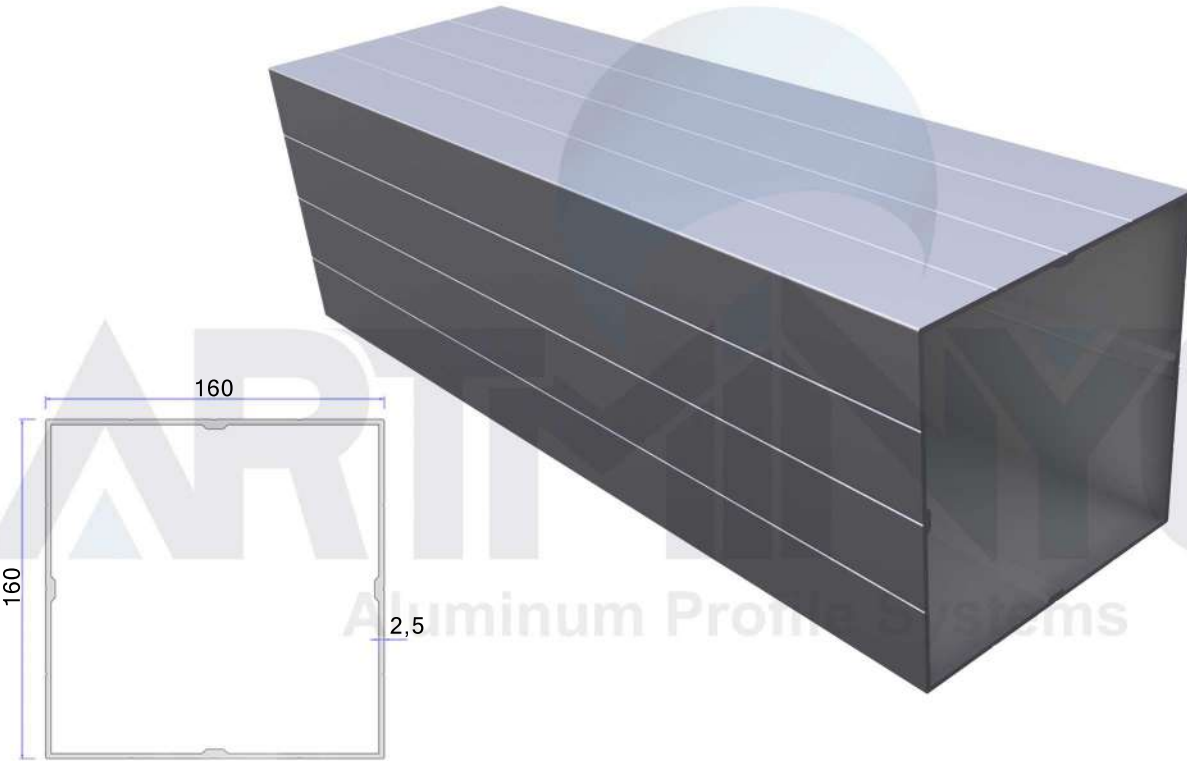


| PROFİL<br>PROFİLE | 2423 | İSMİ<br>NAME | 80X200 OLUK<br>80X200 GUTTER | AĞIRLIK<br>WEIGHT | 3,310 kg/m | UZUNLUK<br>LENGHT | 7 METRE<br>7 METER |
|-------------------|------|--------------|------------------------------|-------------------|------------|-------------------|--------------------|
|-------------------|------|--------------|------------------------------|-------------------|------------|-------------------|--------------------|

**PROFİLLER**  
**PROFİLES**

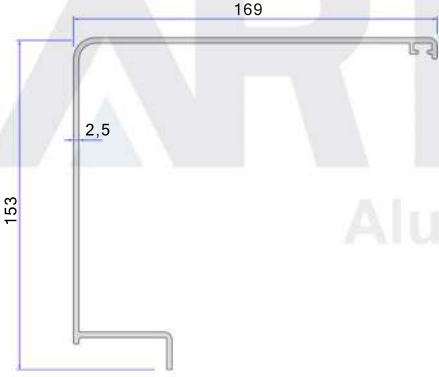
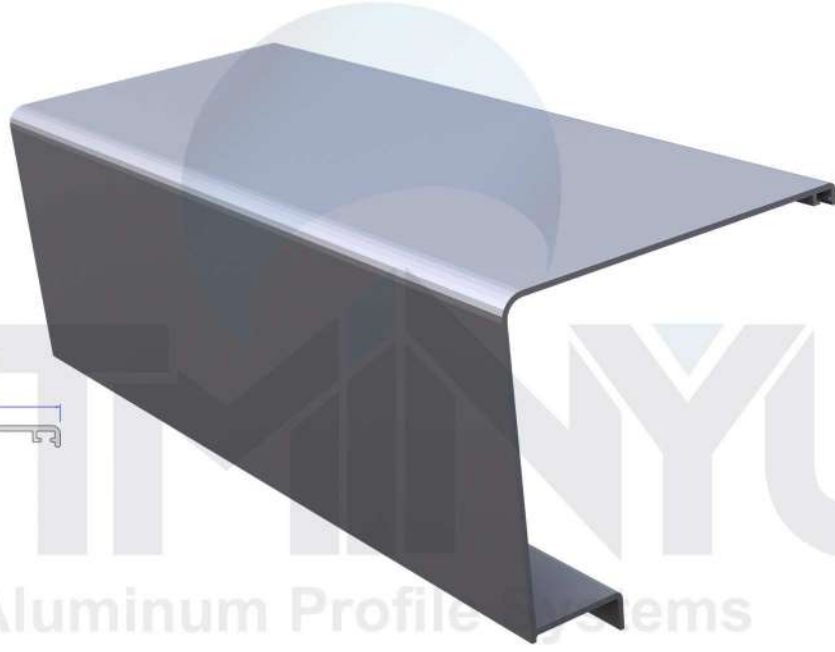


| PROFİL<br>PROFİLE | 2424 | İSMİ<br>NAME | 40X250 OLUK DİKME<br>40X250 GUTTER SEWİNG | AĞIRLIK<br>WEIGHT | 4,667 kg/m | UZUNLUK<br>LENGHT | 7 METRE<br>7 METER |
|-------------------|------|--------------|---|-------------------|------------|-------------------|--------------------|
|-------------------|------|--------------|---|-------------------|------------|-------------------|--------------------|

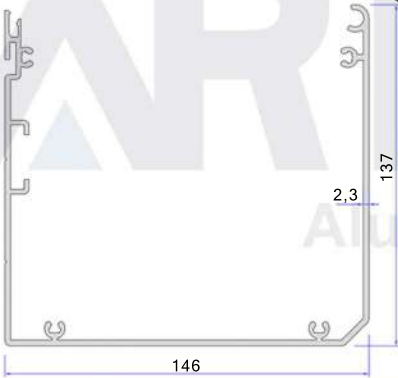


| PROFİL<br>PROFİLE | 2426 | İSMİ<br>NAME | 160X160 DİKME<br>160X160 SEWİNG | AĞIRLIK<br>WEIGHT | 4,472 kg/m | UZUNLUK<br>LENGHT | 7 METRE<br>7 METER |
|-------------------|------|--------------|---------------------------------|-------------------|------------|-------------------|--------------------|
|-------------------|------|--------------|---------------------------------|-------------------|------------|-------------------|--------------------|

**PROFİLLER**  
**PROFİLES**

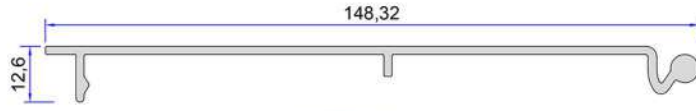
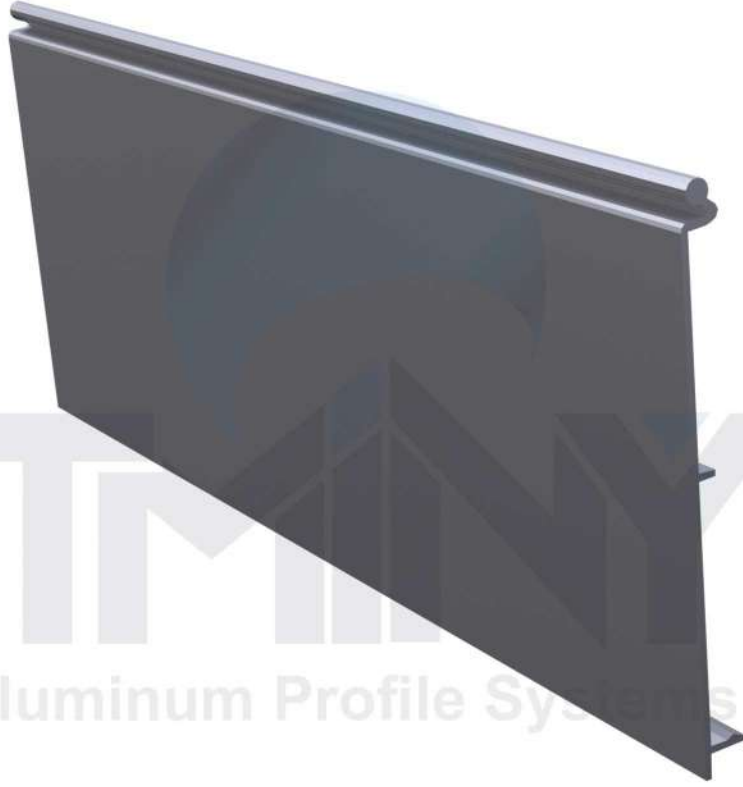


|                          |             |                     |   |                          |                   |                          |                           |
|--------------------------|-------------|---------------------|---|--------------------------|-------------------|--------------------------|---------------------------|
| <b>PROFİL</b><br>PROFİLE | <b>2556</b> | <b>İSMİ</b><br>NAME | <b>LINEER MOTOR</b><br><b>KAPATMA PROFİLİ</b><br>LINEAR MOTOR<br>SHUTDOWN PROFILE | <b>AĞIRLIK</b><br>WEIGHT | <b>2,540 kg/m</b> | <b>UZUNLUK</b><br>LENGHT | <b>7 METRE</b><br>7 METER |
|--------------------------|-------------|---------------------|---|--------------------------|-------------------|--------------------------|---------------------------|



|                          |             |                     |                                   |                          |                   |                          |                           |
|--------------------------|-------------|---------------------|-----------------------------------|--------------------------|-------------------|--------------------------|---------------------------|
| <b>PROFİL</b><br>PROFİLE | <b>2090</b> | <b>İSMİ</b><br>NAME | <b>MOTOR KUTUSU</b><br>ENGINE BOX | <b>AĞIRLIK</b><br>WEIGHT | <b>3,075 kg/m</b> | <b>UZUNLUK</b><br>LENGHT | <b>7 METRE</b><br>7 METER |
|--------------------------|-------------|---------------------|-----------------------------------|--------------------------|-------------------|--------------------------|---------------------------|

PROFİLLER  
PROFİLES



|                          |      |                     |  |                          |            |                          |                           |
|--------------------------|------|---------------------|--|--------------------------|------------|--------------------------|---------------------------|
| <u>PROFİL</u><br>PROFILE | 2091 | <u>İSMİ</u><br>NAME | <u>MOTOR KUTUSU KAPAĞI</u><br>ENGINE BOX COVER | <u>AĞIRLIK</u><br>WEIGHT | 0.915 kg/m | <u>UZUNLUK</u><br>LENGHT | <u>7 METRE</u><br>7 METER |
|--------------------------|------|---------------------|--|--------------------------|------------|--------------------------|---------------------------|



**TİPOLOJİ**  
**TYOLOGY**

ARTIMONYUM®

Aluminum Profile Systems



TİPOLOJİ  
TYPOLOGY



- 4 AYAKLI 1 SİSTEM
- 1 SYSTEM WITH 4 LEGS

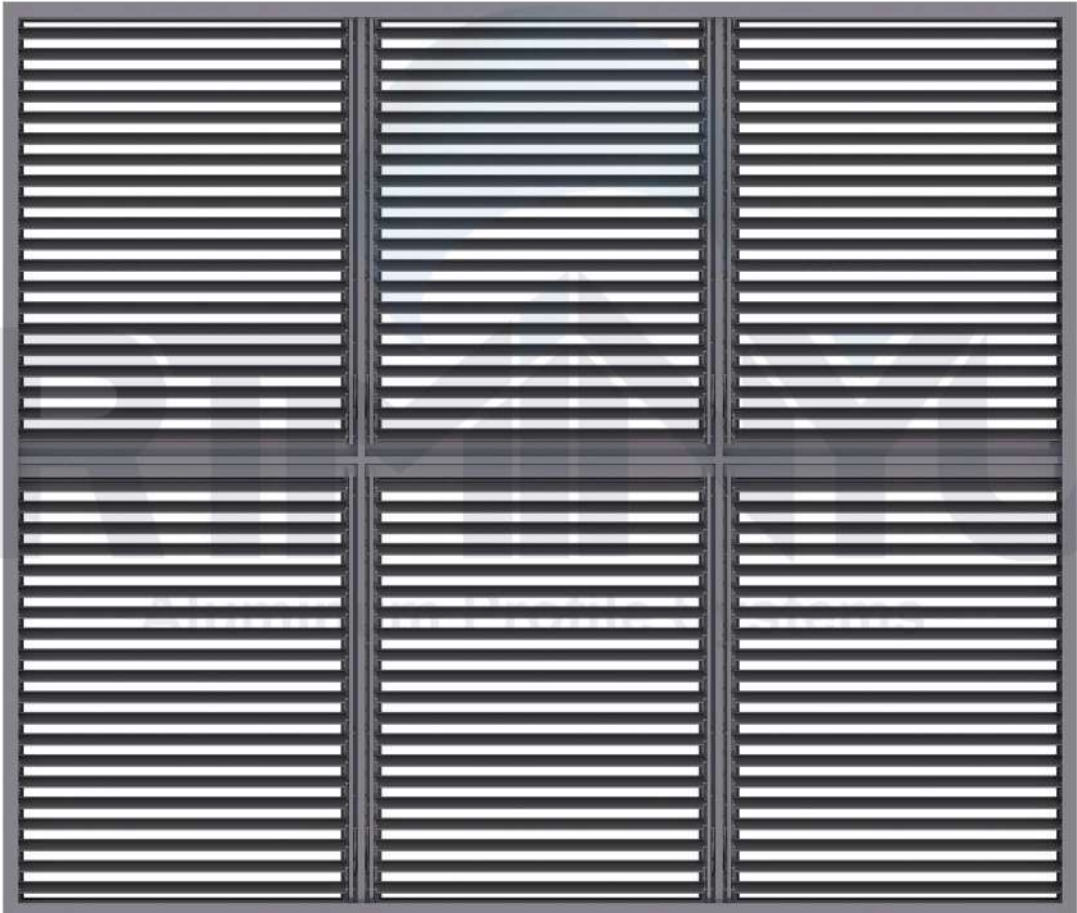


- 6 AYAKLI 2 SİSTEM
- 2 SYSTEMS WITH 6 LEGS

TİPOLOJİ  
TYPOLOGY



- 12 AYAKLI 6 SİSTEM
- 6 SYSTEMS WITH 12 LEGS





**AKSESUARLAR**  
**ACCESSORIES**

ARTIMINIUM®

Aluminum Profile Systems

**AKSESUARLAR  
ACCESSORIES**

| ÜRÜN KODU<br>PRODUCT CODE | ÜRÜN RESMİ<br>PRODUCT IMAGE   | ÜRÜN AÇIKLAMASI<br>PRODUCT DESCRIPTION   | KOLİ ADETİ<br>QUANTITY OF BOX |
|---------------------------|---|--|-------------------------------|
| BIO-01                    |    | AYAK ALT ANKALAJI<br>LOWER FOOT ANCHORAGE  | ???                           |
| BIO-02                    |    | AYAK ORTA ÜST VE KÖŞE ANKALAJI<br>FOOT MIDDLE UPPER AND CORNER ANCHORAGE                       | ???                           |
| BIO-03                    |    | AYAK ORTA ÜST ANKALAJI<br>FOOT MIDDLE UPPER ANCHORAGE  | ???                           |
| BIO-04                    |   | AYAK ÜST KÖŞE ANKALAJI<br>UPPER FOOT CORNER ANCHORAGE  | ???                           |
| BIO-06                    |  | T10 TRİGER KAYIŞ BİRLEŞTİRME<br>VE ÇEKME APARATI<br>T10 TRIGER BELT JOINT<br>AND TOWING DEVICE | ???                           |
| BIO-07                    |  | 6001 RULMAN YATAĞI<br>6001 ROLLER BEARING  | ???                           |
| BIO-08-01                 |  | PANEL SOL TEKER TAKIMI<br>PANEL LEFT WHEEL SET   | ???                           |
| BIO-08-02                 |  | PANEL SAĞ TEKER TAKIMI<br>PANEL RIGHT WHEEL SET  | ???                           |
| BIO-09                    |  | LİNEER MOTOR MAFSALI<br>LINEAR MOTOR JOINT   | ???                           |

**AKSESUARLAR  
ACCESSORIES**

| ÜRÜN KODU<br>PRODUCT CODE | ÜRÜN RESMİ<br>PRODUCT IMAGE   | ÜRÜN AÇIKLAMASI<br>PRODUCT DESCRIPTION  | KOLİ ADETİ<br>QUANTITY OF BOX |
|---------------------------|---|---|-------------------------------|
| BIO-10                    |    | MOTOR KUTU YAN KAPAĞI SOL<br>ENGINE BOX SIDE COVER LEFT                               | ???                           |
| BIO-11                    |    | MOTOR KUTU YAN KAPAĞI SAĞ<br>ENGINE BOX SIDE NOTCHING RIGHT                           | ???                           |
| BIO-12                    |    | 160X160 DİKME KERTME ŞABLONU<br>160X160 SEWING LASTING TEMPLATE                       | ???                           |
| BIO-13                    |   | LİNEER MOTOR ARKA<br>SABİTLEME MAFSALI<br>LINEAR MOTOR REAR<br>FIXING JOINT           | ???                           |
| BIO-14                    |  | OLUK 90° TOPLAMA APARATI<br>GROOVE 90° COLLECTING DEVICE                              | ???                           |
| BIO-15                    |  | RAY SABİTLEME (L) APARATI<br>RAIL FIXING (L) APPARATUS                                | ???                           |
| BIO-16                    |  | DİKME ve KÖŞE BİRLEŞTİRME APARATI<br>SEWING AND CORNER JOINING APPARATUS              | ???                           |
| BIO-17                    |  | T10 TRİGER KAYIŞ GERME APARATI<br>T10 TRIGER BELT TENSIONING DEVICE                   | ???                           |
| BIO-18                    |  | ARKA SABİT PANEL ÜST<br>BAĞLANTI PARÇASI<br>REAR FIXED PANEL UPPER<br>CONNECTION PART | ???                           |

**AKSESUARLAR**  
**ACCESSORIES**

| ÜRÜN KODU<br>PRODUCT CODE | ÜRÜN RESMİ<br>PRODUCT IMAGE   | ÜRÜN AÇIKLAMASI<br>PRODUCT DESCRIPTION   | KOLİ ADETİ<br>QUANTITY OF BOX |
|---------------------------|---|--|-------------------------------|
| BIO-19                    |    | ARKA SABİT PANEL ALT<br>BAĞLANTI PARÇASI<br>REAR FIXED PANEL BOTTOM<br>CONNECTION PART | ???                           |
| BIO-23                    |    | LİNEER MOTOR ÜST<br>SABİTLEME APARATI<br>LINEAR MOTOR TOP<br>FIXING APPARATUS          | ???                           |
| BIO-25                    |    | LİNEER MOTOR MAFSALI<br>SABİTLEME APARATI<br>LINEAR MOTOR JOINT<br>FIXING APPARATUS    | ???                           |
| BIO-26                    |   | T10 TRİGER DİŞLİSİ (60mm)<br>T10 TRİGER GEAR (60mm)                                    | ???                           |
| BIO-27                    |  | T10 TRİGER KAYIŞ YÖN<br>VERME APARATI<br>T10 TRİGER BELT<br>DIRECTION APPARATUS        | ???                           |
| BIO-28                    |  | 6001 RULMAN<br>60001 ROLLER  | ???                           |
| BIO-29                    |  | SEKİZGEN BORU BAŞI<br>OCTOGON PIPE APPARATUS   | ???                           |
| BIO-30                    |  | LED TRAFOSU<br>LED TRANSFORMER   | ???                           |
| BIO-31                    |  | SEKİZGEN BORU<br>OCTOGON PIPE  | ???                           |

**AKSESUARLAR  
ACCESSORIES**

| ÜRÜN KODU<br>PRODUCT CODE | ÜRÜN RESMİ<br>PRODUCT IMAGE   | ÜRÜN AÇIKLAMASI<br>PRODUCT DESCRIPTION                  | KOLİ ADETİ<br>QUANTITY OF BOX |
|---------------------------|---|---|-------------------------------|
| BIO-32                    |    | İZOLELİ LED<br>INSULATED LED                            | ???                           |
| BIO-33                    |    | DFİZÖR KAPAĞI<br>DIFFUSER COVER                         | ???                           |
| BIO-34                    |    | T10X16 TRİGER KAYIŞ<br>T10X16 TRIGGER BELT              | ???                           |
| BIO-35                    |   | LAMEL FİTİLİ<br>LAMELLA WICK                            | ???                           |
| BIO-36                    |  | SU OLUK FİTİLİ<br>WATER GUTTER WICK                     | ???                           |
| BIO-37                    |  | 4+2=6 İZOLELİ ÇELİK HALAT<br>4+2=6 INSULATED STEEL ROPE | ???                           |
| BIO-38                    |  | 2000X24,5 MM LİNEER MOTOR<br>2000X24,5 LINEAR MOTOR     | ???                           |
| BIO-39                    |  | LİNEER MOTOR PANELİ<br>LINEAR MOTOR PANEL               | ???                           |
| BIO-40                    |  | 120NM SOMFY MOTOR<br>120NM SOMFY MOTOR                  | ???                           |
| BIO-41                    |  | SOMFY KUMANDA<br>SOMFY CONTROL                          | ???                           |

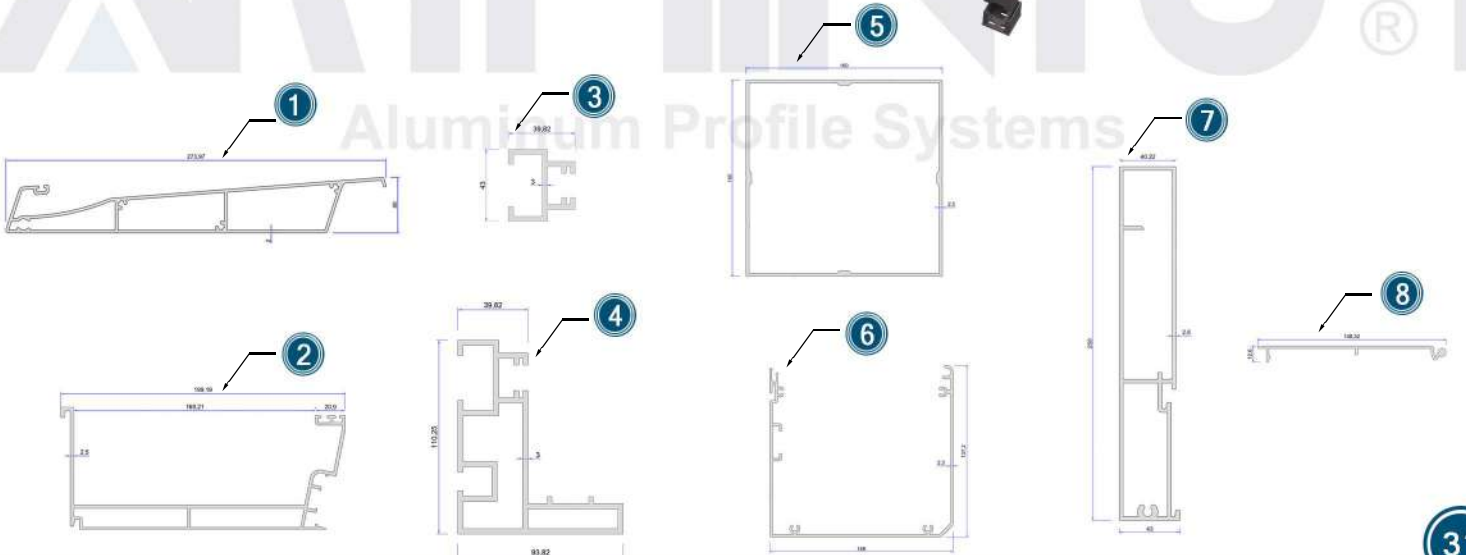


# KURULUM TALİMATLARI INSTALLATION INSTRUCTIONS

Aluminum Profile Systems

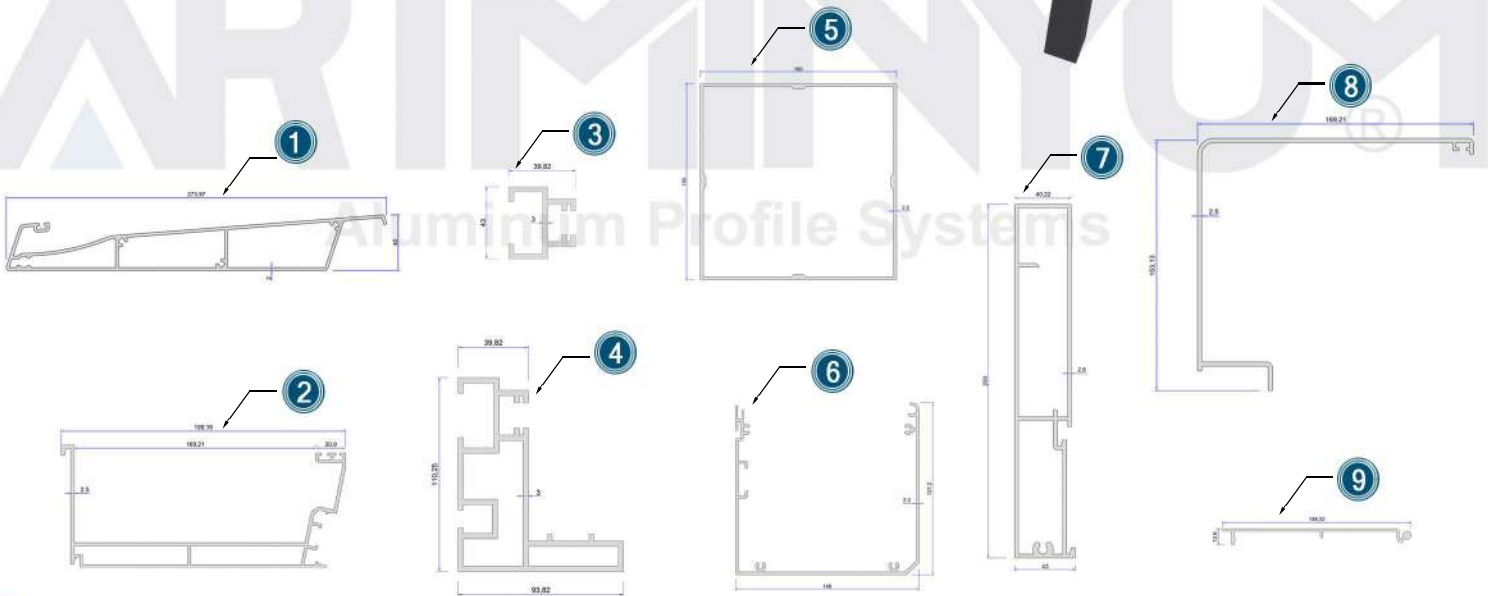


MONTAJ ŞEMASI  
ASSEMBLY DIAGRAM



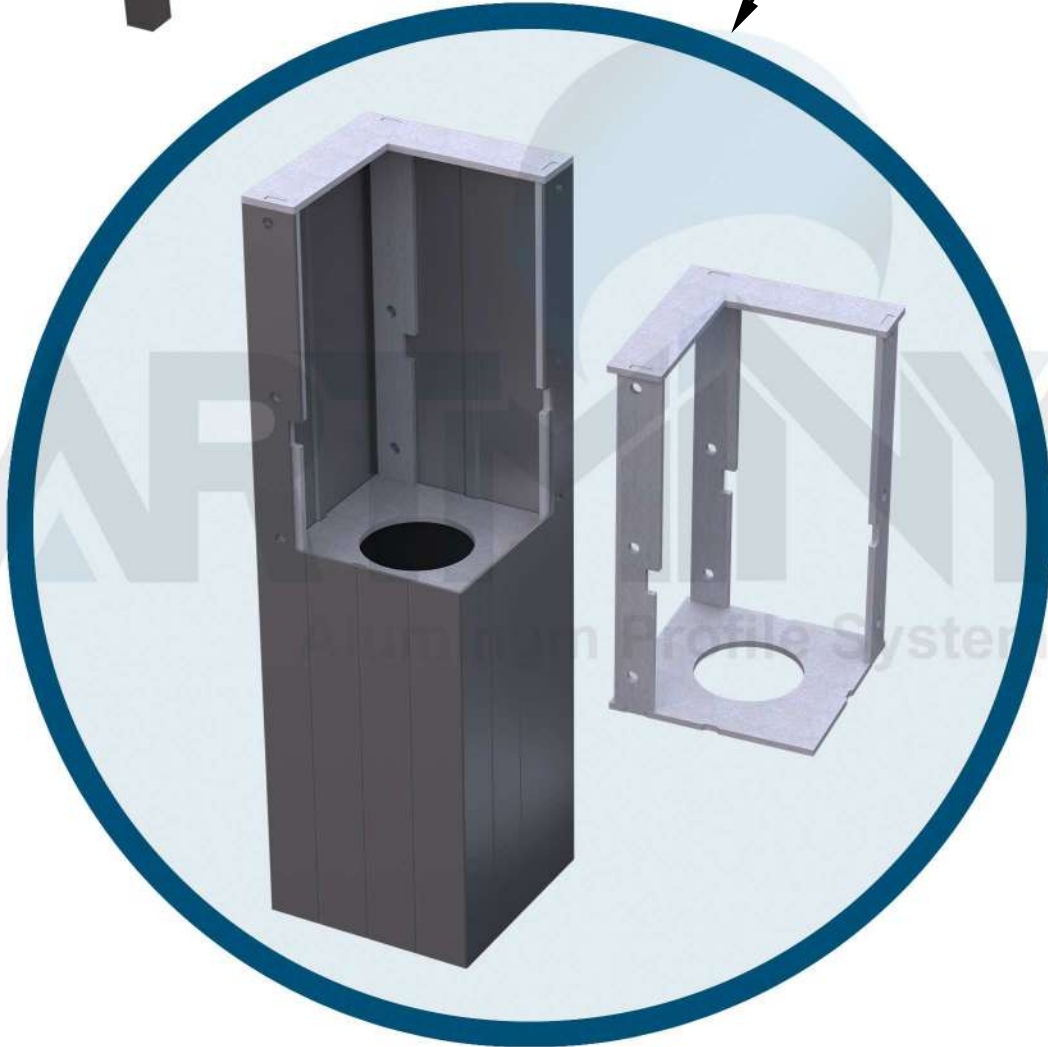
**MONTAJ ŞEMASI**  
**ASSEMBLY DIAGRAM**

**SİSTEM PROFİL KONUMLARI**  
**SYSTEM PROFILE LOCATIONS**



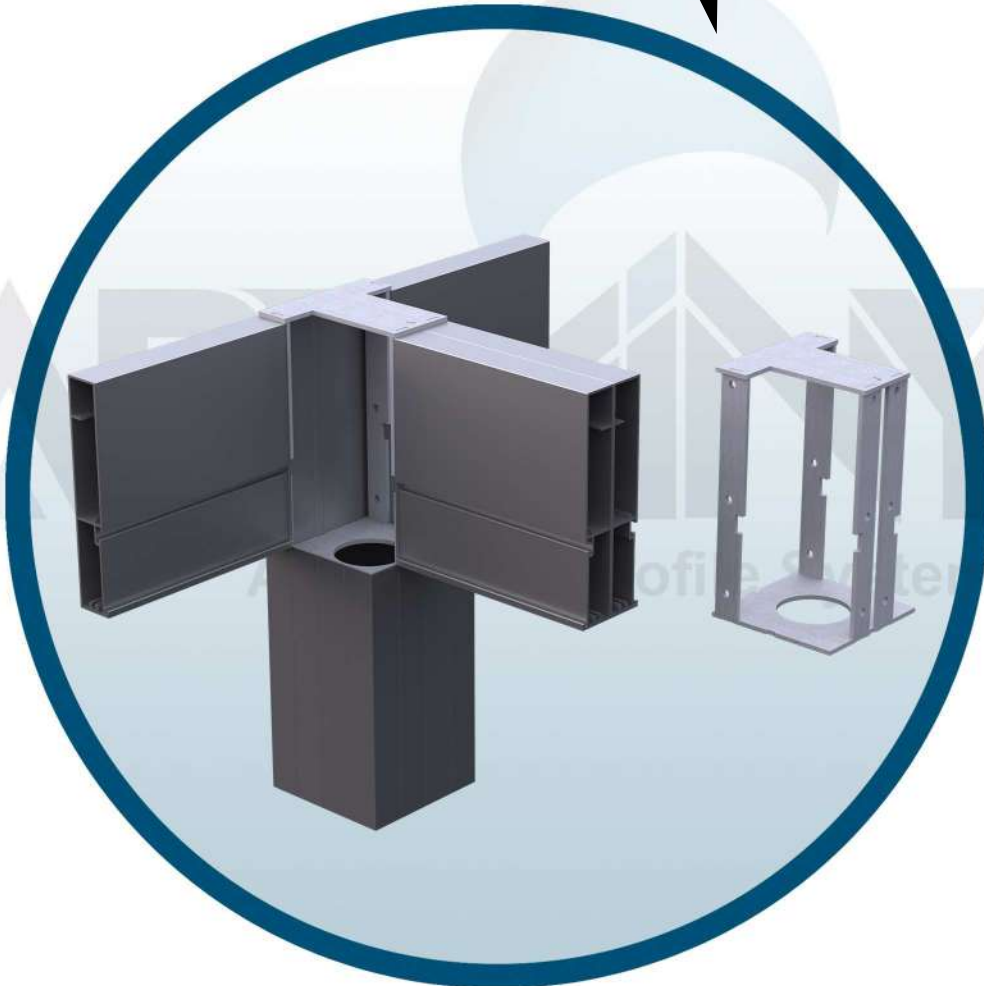
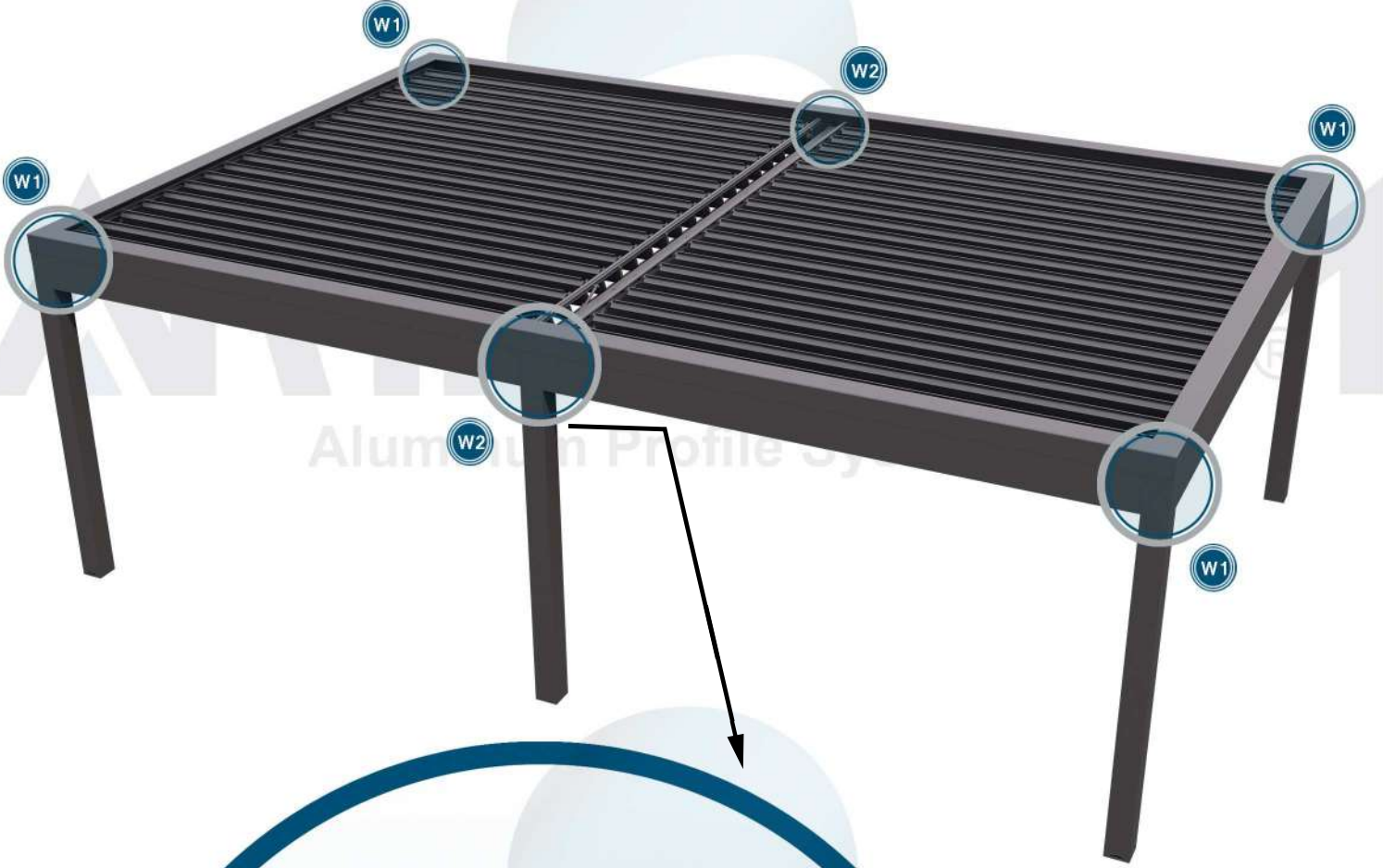
**MONTAJ ŐEMASI**  
**ASSEMBLY DIAGRAM**

**KŐŐE BAĐLANTI SİSTEMLERİ**  
**CORNER CONNECTION SYSTEMS**



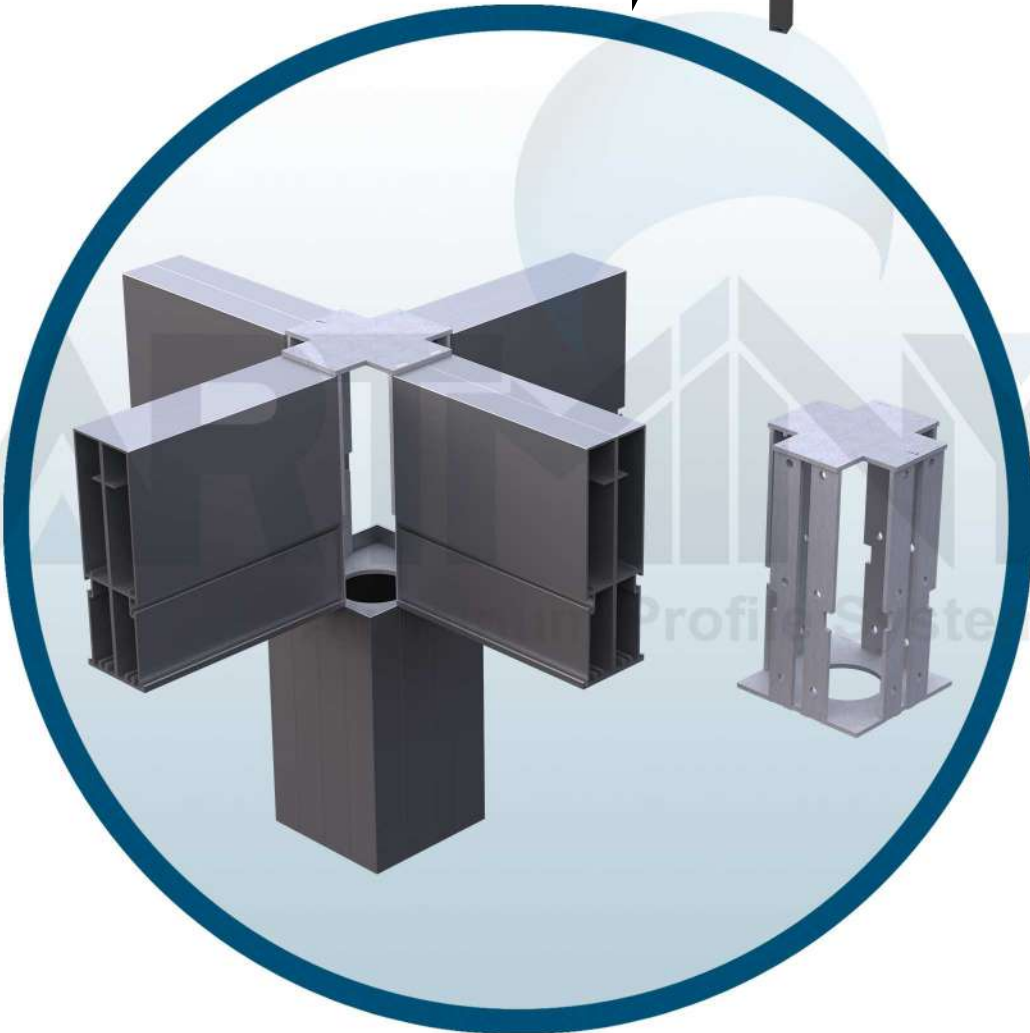
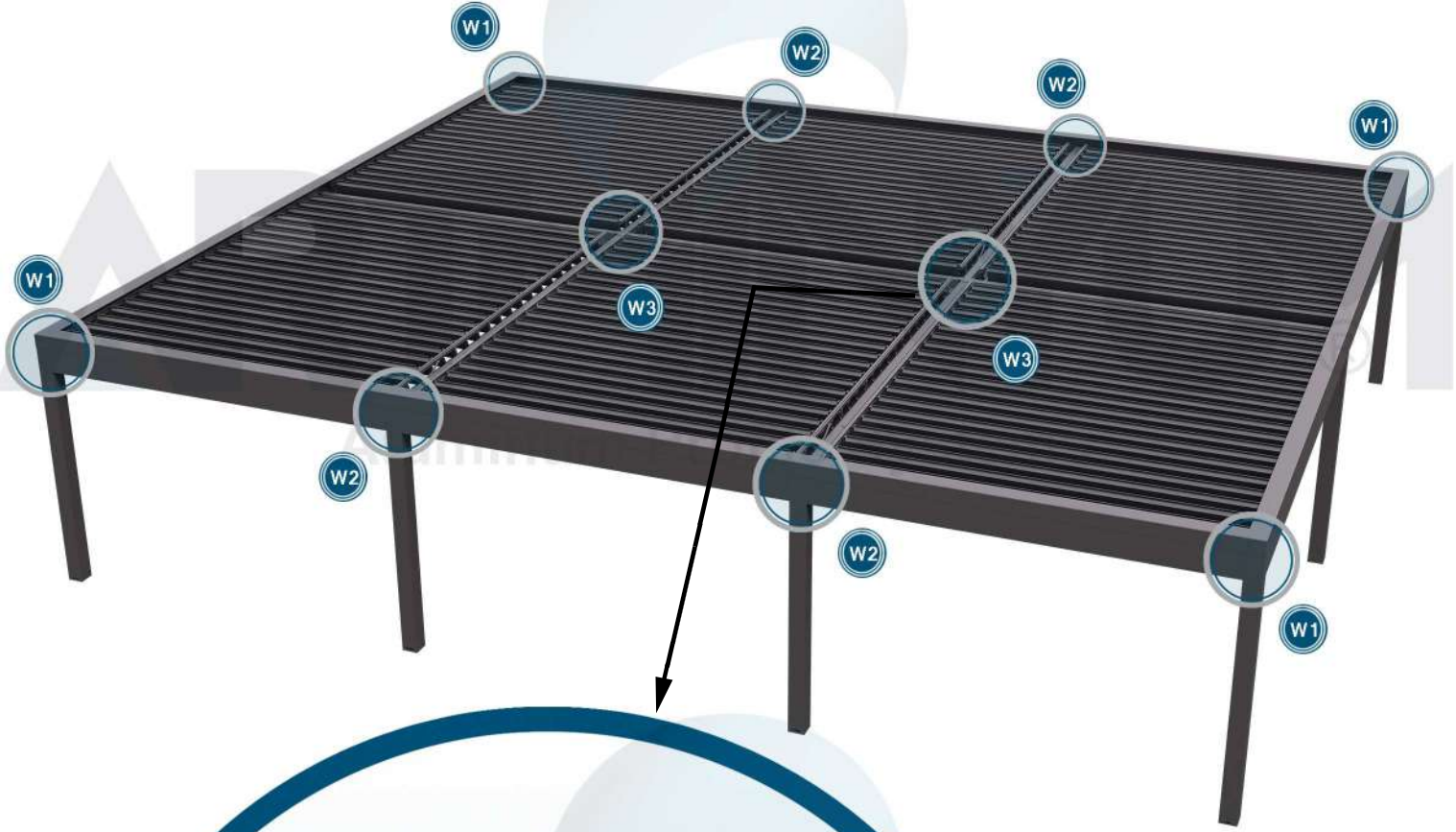
**MONTAJ ŞEMASI**  
**ASSEMBLY DIAGRAM**

**KÖŞE BAĞLANTI SİSTEMLERİ**  
**CORNER CONNECTION SYSTEMS**



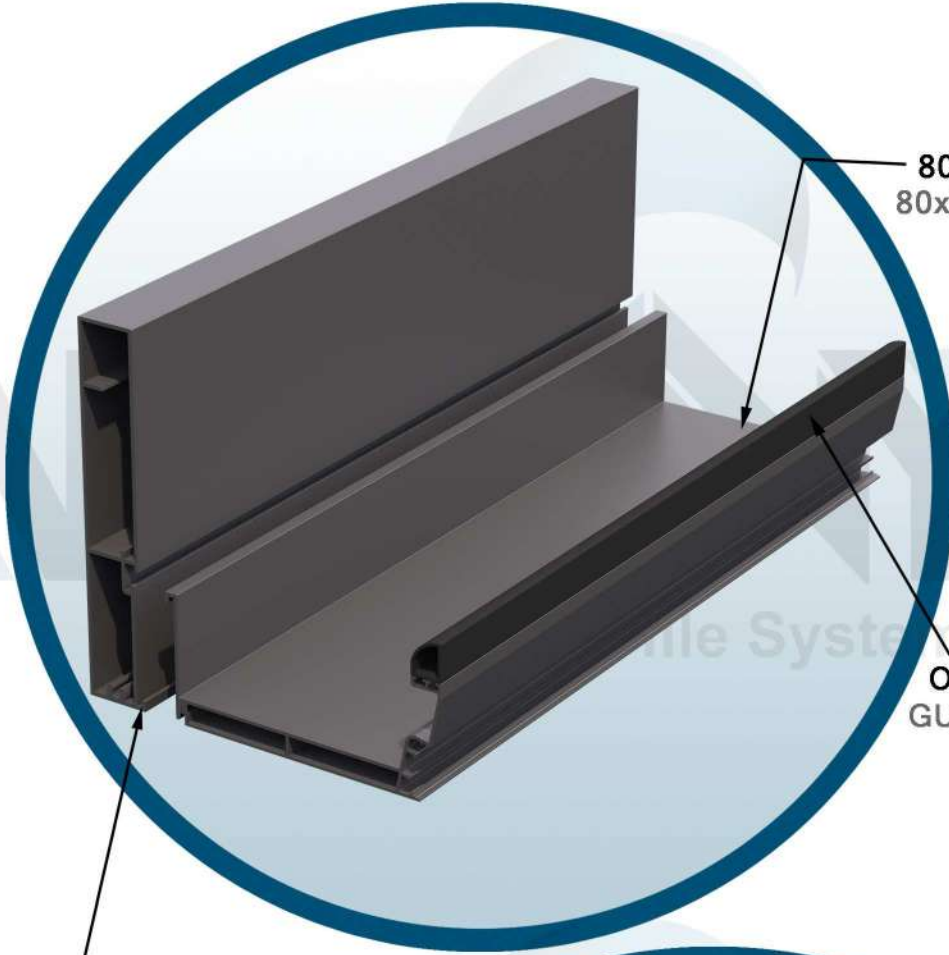
**MONTAJ ŐEMASI**  
**ASSEMBLY DIAGRAM**

**KŐŐE BAĐLANTI SİSTEMLERİ**  
**CORNER CONNECTION SYSTEMS**





**MONTAJ ŞEMASI**  
**ASSEMBLY DIAGRAM**



**80x200 OLUK**  
**80x200 GUTTER**

**OLUK EPDM CONTASI**  
**GUTTER EPDM GASKET**

**40X250 OLUK DİKME**  
**40X250 GUTTER SEWING**



**RAY ÜST EK**  
**RAIL UPPER ADDITION**

**LİNEER MOTOR**  
**LINEAR MOTOR**

**RAY**  
**RAIL**

**İMALAT ŞEMASI**  
MANUFACTURING SCHEME

**BAĞLANTI İŞLEMLERİ**  
CONNECTION PROCEDURES

BIO - 04 AYAK ÜST KÖŞE ANKALAJI  
BIO - 04 UPPER FOOT CORNER ANKALG

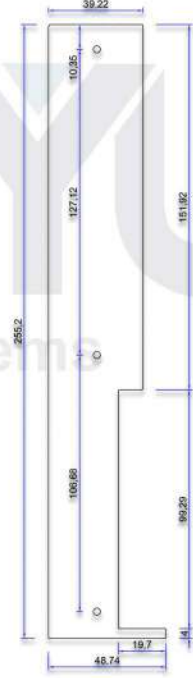
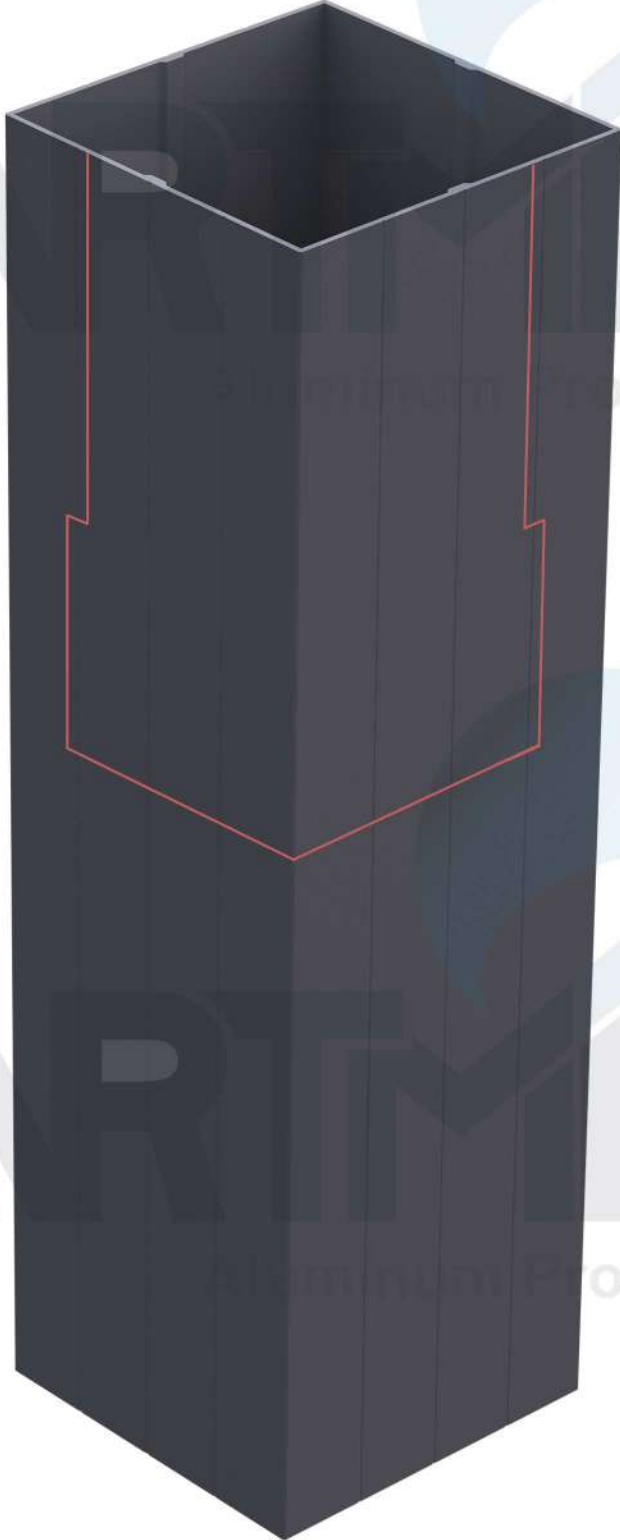


160X160 DİKME  
160X160 SEWING

2426 KALIP NUMARASI  
MOLD NUMBER

**İMALAT ŞEMASI**  
MANUFACTURING SCHEME

**BAĞLANTI İŞLEMLERİ**  
CONNECTION PROCEDURES



**KESİM ŞABLONU**  
CUTTING TEMPLATE



**2426 KALIP NUMARASI**  
MOLD NUMBER



**İMALAT ŞEMASI**  
MANUFACTURING SCHEME

**BAĞLANTI İŞLEMLERİ**  
CONNECTION PROCEDURES

BIO - 02 AYAK ORTA ÜST VE KÖŞE ANKALAJI  
BIO - 02 FOOT MIDDLE TOP AND CORNER ANCALG

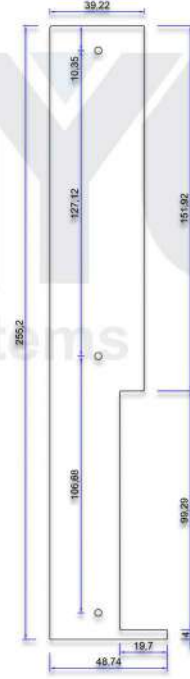
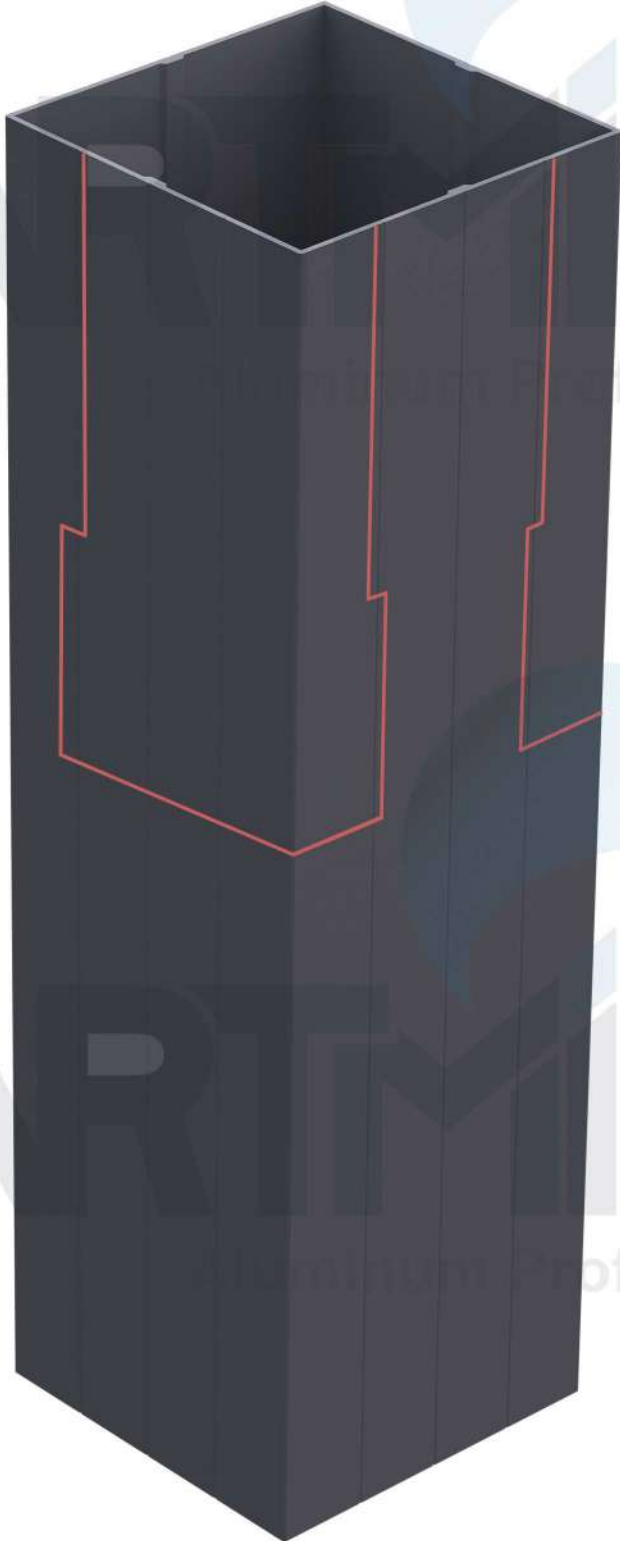


160X160 DİKME  
160X160 SEWING

2426 KALIP NUMARASI  
MOLD NUMBER

**İMALAT ŞEMASI**  
MANUFACTURING SCHEME

**BAĞLANTI İŞLEMLERİ**  
CONNECTION PROCEDURES



**KESİM ŞABLONU**  
CUTTING TEMPLATE



**2426 KALIP NUMARASI**  
MOLD NUMBER

**İMALAT ŞEMASI**  
MANUFACTURING SCHEME

**BAĞLANTI İŞLEMLERİ**  
CONNECTION PROCEDURES

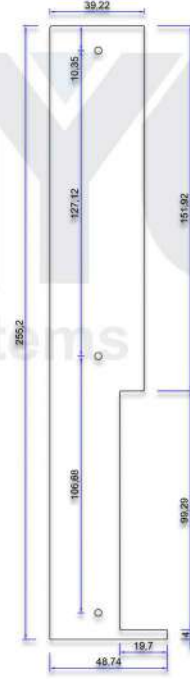
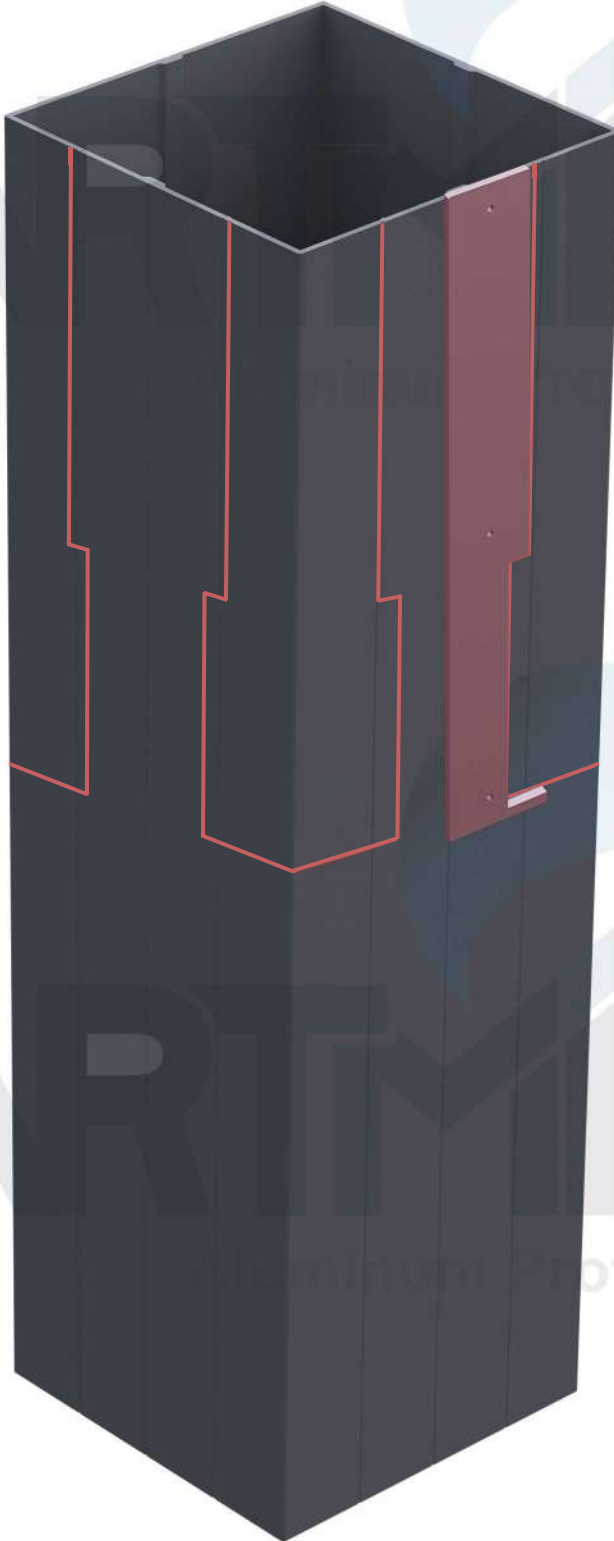
BIO - 02 AYAK ORTA ÜST VE KÖŞE ANKALAJI  
BIO - 02 FOOT MIDDLE TOP AND CORNER ANCALG



2426 KALIP NUMARASI  
MOLD NUMBER

**İMALAT ŞEMASI**  
MANUFACTURING SCHEME

**BAĞLANTI İŞLEMLERİ**  
CONNECTION PROCEDURES



**KESİM ŞABLONU**  
CUTTING TEMPLATE



**2426 KALIP NUMARASI**  
MOLD NUMBER



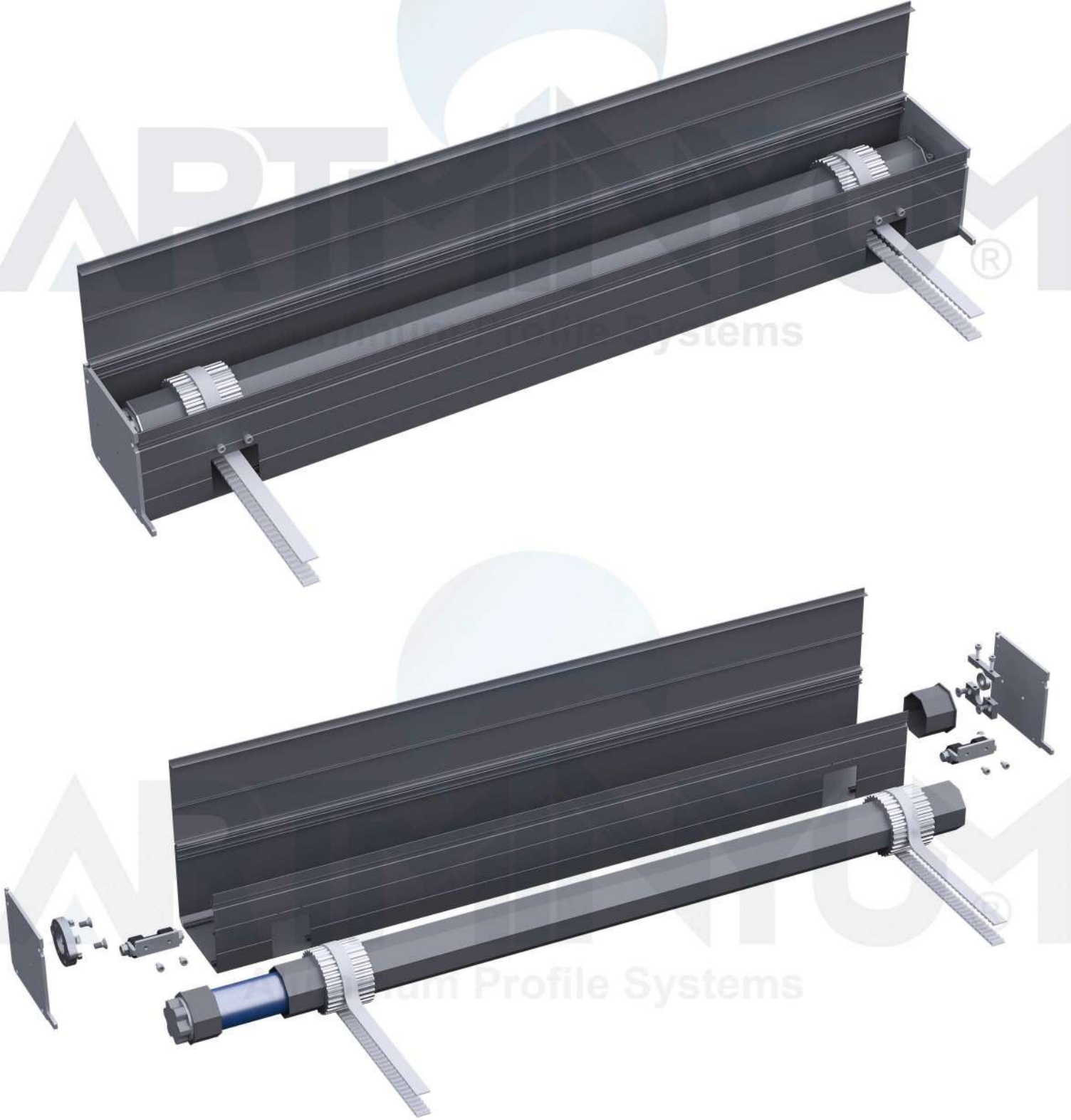
**İMALAT ŞEMASI**  
MANUFACTURING SCHEME

**LAMEL MONTAJI**  
LAMEL INSTALLATION



**İMALAT ŞEMASI**  
MANUFACTURING SCHEME

**MOTOR KUTUSU MONTAJI**  
ENGINE BOX INSTALLATION



**İMALAT ŞEMASI**  
MANUFACTURING SCHEME

**MOTOR KUTUSU MONTAJI**  
ENGINE BOX INSTALLATION

